

# Medium Static Pressure Duct

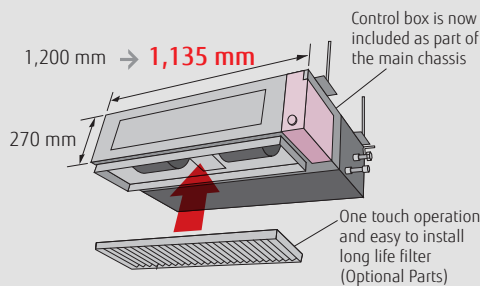


ARXG22KMLA / AOYG22KBTB  
 ARXG24KMLA / AOYG24KBTB  
 ARXG30KMLA / AOYG30KBTB  
 ARXG36KMLA / AOYG36KBTB  
 ARXG45KMLA / AOYG45KBTB

## Point Slim & compact design

### Indoor Unit

The slim and compact design of the indoor unit, with the control box mounted on the side of the unit, allows installation in narrow spaces.

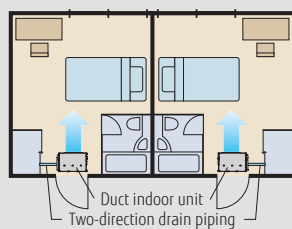


### New Outdoor Unit

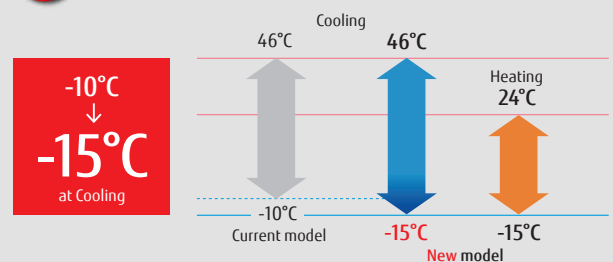
45 model outdoor unit was changed completely. Easier installation was realized by compact and lightweight outdoor unit.



## Point Two-direction drain piping



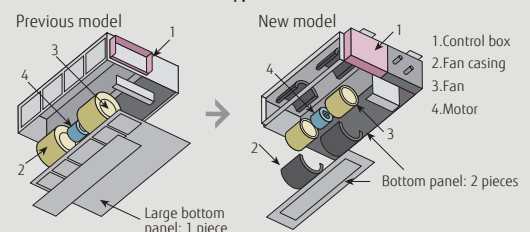
## Point Low ambient operation



## Point Easy maintenance

Structural improvement is attained by making the bottom panel two pieces, front and rear. The internal fan casing is also manufactured in two pieces, namely upper and lower. The maintenance of the motor and fan can be easily carried out by removing the rear panel and the lower part of the casing while leaving the main chassis installed.

See below for the case of rear suction type



**Model: ARXG22KMLA / ARXG24KMLA / ARXG30KMLA / ARXG36KMLA / ARXG45KMLA  
AOYG22KBTB / AOYG24KBTB / AOYG30KBTB / AOYG36KBTB / AOYG45KBTB**



AOYG22KBTB

AOYG24KBTB

AOYG30/36KBTB

AOYG45KBTB

**Optional parts**

Wired Remote Controller: UTY-RNRYZ3, UTY-RLRY, UTY-RVNYM, UTY-RNNYM  
Simple Remote Controller: UTY-RSRY, UTY-RHRY, UTY-RSNYM

IR Receiver Kit: UTY-LBITYM  
Wireless LAN Interface: UTY-TFSXZ1  
Remote Sensor Unit: UTY-XSZX

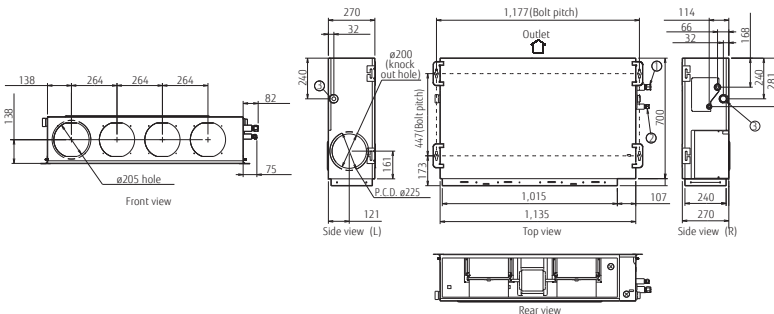
Long Life Filter: UTD-LF25NA  
External Connect Kit: UTY-XWZXZG  
Drain Pump Unit: UTY-PX1NBA

Flange(Round): UTD-RF204  
Flange(Square): UTD-SF045T

**Dimensions**

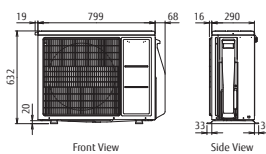
(Unit : mm)

**Indoor unit :**  
ARXG22/24/30/36/45KMLA

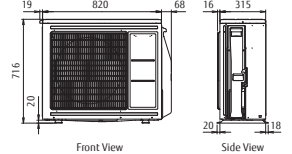


- ① Refrigerant piping flare connection (Liquid)
- ② Refrigerant piping flare connection (Gas)
- ③ Drain piping connection

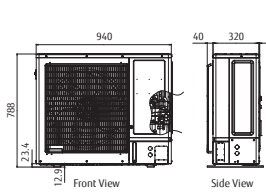
**Outdoor unit :**  
AOYG22KBTB



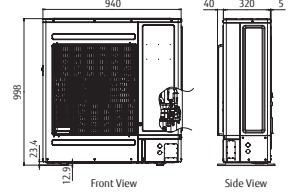
AOYG24KBTB



AOYG30/36KBTB



AOYG45KBTB



**Specifications**

Model No.	Indoor unit		ARXG22KMLA	ARXG24KMLA	ARXG30KMLA	ARXG36KMLA	ARXG45KMLA
	Outdoor unit		AOYG22KBTB	AOYG24KBTB	AOYG30KBTB	AOYG36KBTB	AOYG45KBTB
Power Source	Single-phase, ~230V, 50Hz						
Capacity	Cooling	kW	6.0 (0.9-6.7)	6.8 (0.9-8.0)	8.5 (2.8-10.0)	9.5 (2.8-11.2)	12.1 (4.0-13.0)
	Heating		7.0 (0.9-8.0)	7.5 (0.9-9.1)	10.0 (2.7-11.2)	10.8 (2.7-12.7)	13.5 (4.2-15.2)
Input Power	Cooling/Heating	kW	1.78/1.87	2.14/1.97	2.65/2.63	2.97/2.88	4.22/3.84
EER	Cooling	W/W	3.37	3.18	3.21	3.20	2.87
	Heating		3.74	3.80	3.80	3.75	3.52
Pdesign	Cooling/Heating(-10°C)	kW	6.0/4.8	6.8/6.0	8.5/8.0	9.5/8.7	-
SEER	Cooling	W/W	6.10	6.20	6.23	6.10	-
	Heating		4.10	4.10	4.00	4.00	-
SCOP	Cooling	W/W	6.10	6.20	6.23	6.10	-
	Heating		4.10	4.10	4.00	4.00	-
Energy Efficiency Class	Cooling		A++	A+	A+	A+	-
	Heating		A+	A+	A+	A+	-
Max. Operating Current	Cooling/Heating	A	12.6	13.6	22.6	22.6	28.5
Annual Energy Consumption	Cooling	kWh/a	344	384	477	545	-
	Heating		1,637	2,045	2,797	3,044	-
Moisture Removal		l/h	2.1	2.5	2.5	3.0	4.0
Sound Pressure Level	Indoor (Cooling)	H/M/L/Q	31/29/27/25	31/29/27/25	39/35/30/26	39/35/30/26	42/38/32/28
	Indoor (Heating)	H/M/L/Q	31/29/27/25	31/29/27/25	42/35/30/26	42/35/30/26	42/38/32/28
Sound Power Level	Outdoor(Cooling/Heating)	High	51/51	53/54	53/55	55/55	57/57
	Indoor(Cooling/Heating)	High	60/62	60/62	65/69	65/70	68/70
Airflow Rate	Indoor / Outdoor (Cooling)	High	1,100/2,240	1,100/2,700	1,900/3,750	1,900/3,750	2,100/4,450
	Indoor / Outdoor (Heating)	High	1,100/1,960	1,100/2,700	2,100/3,750	2,100/3,750	2,100/4,450
Static pressure range (Standard)		Pa	30 to 150 (35)	30 to 150 (35)	30 to 150 (47)	30 to 150 (47)	30 to 150 (60)
Net Dimensions H x W x D	Indoor	mm	270x1,135x700	270x1,135x700	270x1,135x700	270x1,135x700	270x1,135x700
	Outdoor	mm	632x799x290	716x820x315	788x940x320	788x940x320	998x940x320
Weight	Indoor	kg(lbs)	35 (77)	35 (77)	40 (88)	38 (84)	39 (86)
	Outdoor	kg(lbs)	38 (84)	42 (93)	52 (115)	52 (115)	67 (148)
Connection Pipe Diameter (Liquid / Gas)		mm	6.35/12.70	6.35/12.70	9.52/15.88	9.52/15.88	9.52/15.88
Drain hose Diameter (I.D./O.D.)		mm	35.7/38.1	35.7/38.1	35.7/38.1	35.7/38.1	35.7/38.1
Max Pipe Length (Pre-Charge)		m	30 (20)	30 (20)	50 (30)	50 (30)	50 (30)
Max Height Difference		m	25	25	30	30	30
Operation Range	Cooling	°CDB	-15 to 46	-15 to 46	-15 to 46	-15 to 46	-15 to 46
	Heating		-15 to 24	-15 to 24	-15 to 24	-15 to 24	-15 to 24
Refrigerant	Type (Global Warming Potential)		R32 (675)	R32 (675)	R32 (675)	R32 (675)	R32 (675)
	Charge	kg(CO2eq-T)	1.25 (0.844)	1.25 (0.844)	1.90 (1.283)	1.90 (1.283)	2.70 (1.823)

Note : Specifications are based on the following conditions.  
Cooling : Indoor temperature of 27°CDB / 19°CWB, and outdoor temperature of 35°CDB / 24°CWB.  
Heating : Indoor temperature of 20°CDB / (15°CWB), and outdoor temperature of 7°CDB / 6°CWB.

•Specifications and design are subject to change without notice for further improvement.  
•Actual products' colors may be different from the colors shown in this printed material.

Distributed by :



ISO 9001 Certified number: 01 180 075229 Fujitsu General (Thailand) Co., Ltd. ISO 14001 Certified number: 01 184 5245 Fujitsu General (Thailand) Co., Ltd. ISO 9001 Certified number: 159170207285M Fujitsu General Central Air-conditioner(Wuxi) Co., Ltd. ISO 14001 Certified number: 159182302185M Fujitsu General Central Air-conditioner(Wuxi) Co., Ltd.



**FUJITSU GENERAL LIMITED**

3-3-17, Suenaga, Takatsu-ku, Kawasaki 213-8502, Japan  
<https://www.fujitsu-general.com/>